



**LC**  
**RT**

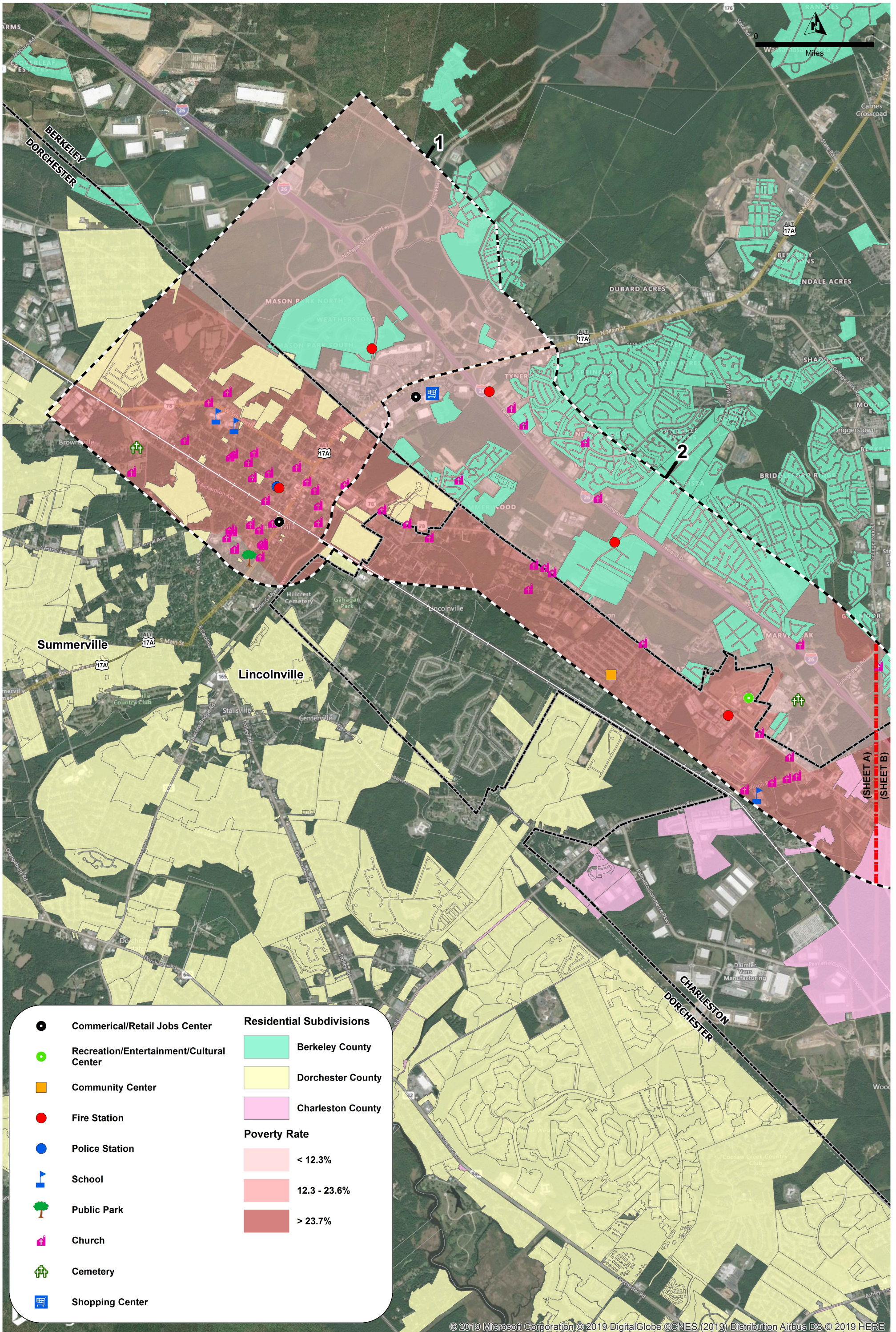


# Appendix J

Constraint Maps



This page intentionally left blank.



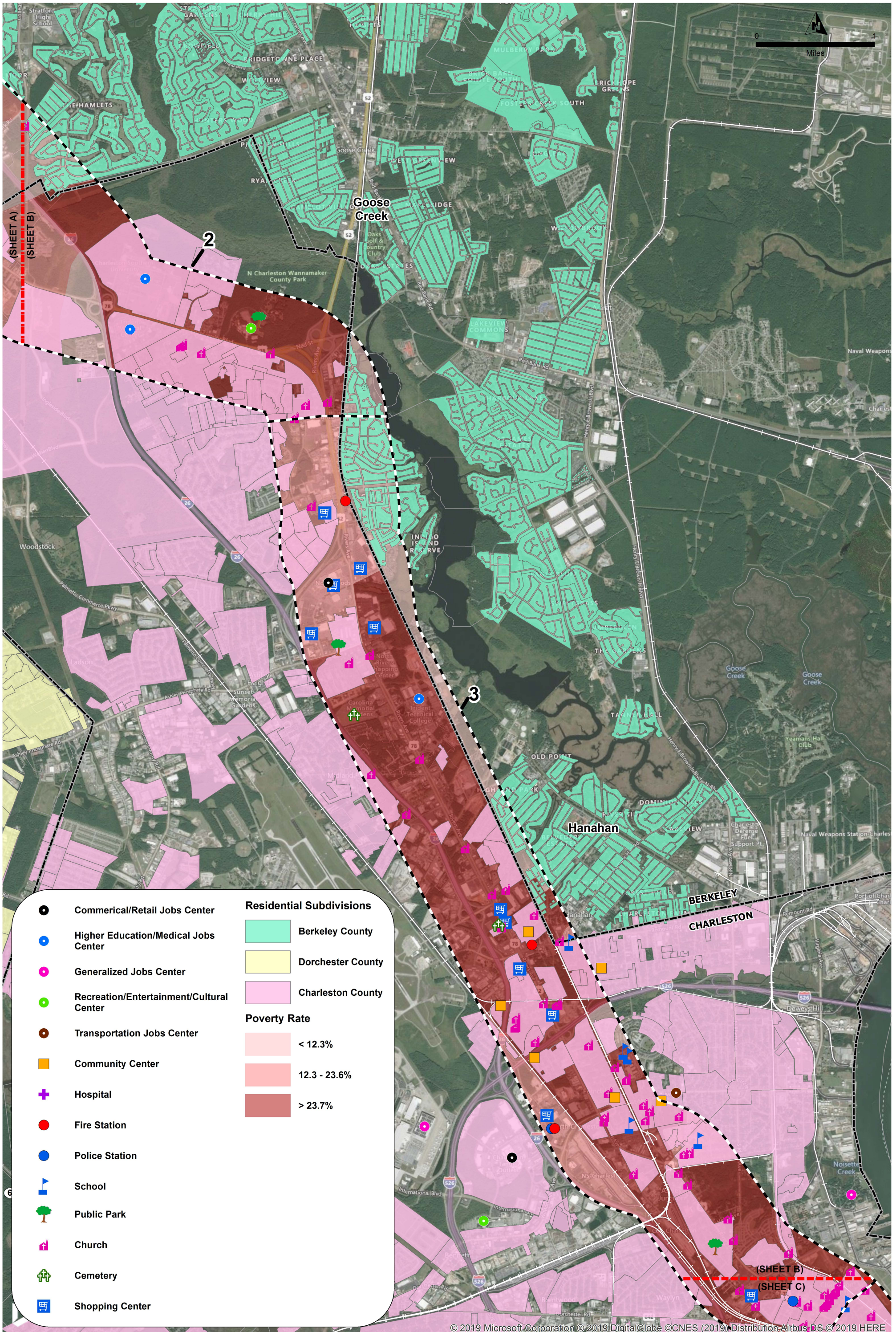
© 2019 Microsoft Corporation © 2019 DigitalGlobe © CNES (2019) Distribution Airbus DS © 2019 HERE



Study Segment Zones  
County Boundaries  
Match Line

### Lowcountry Rapid Transit Community Constraints (Sheet A)

Data Sources: BCDCOG, SCDOT, Bing Maps, HDR, SCDOT, Census ACS 2017

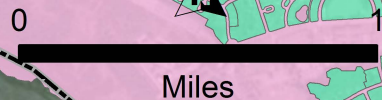
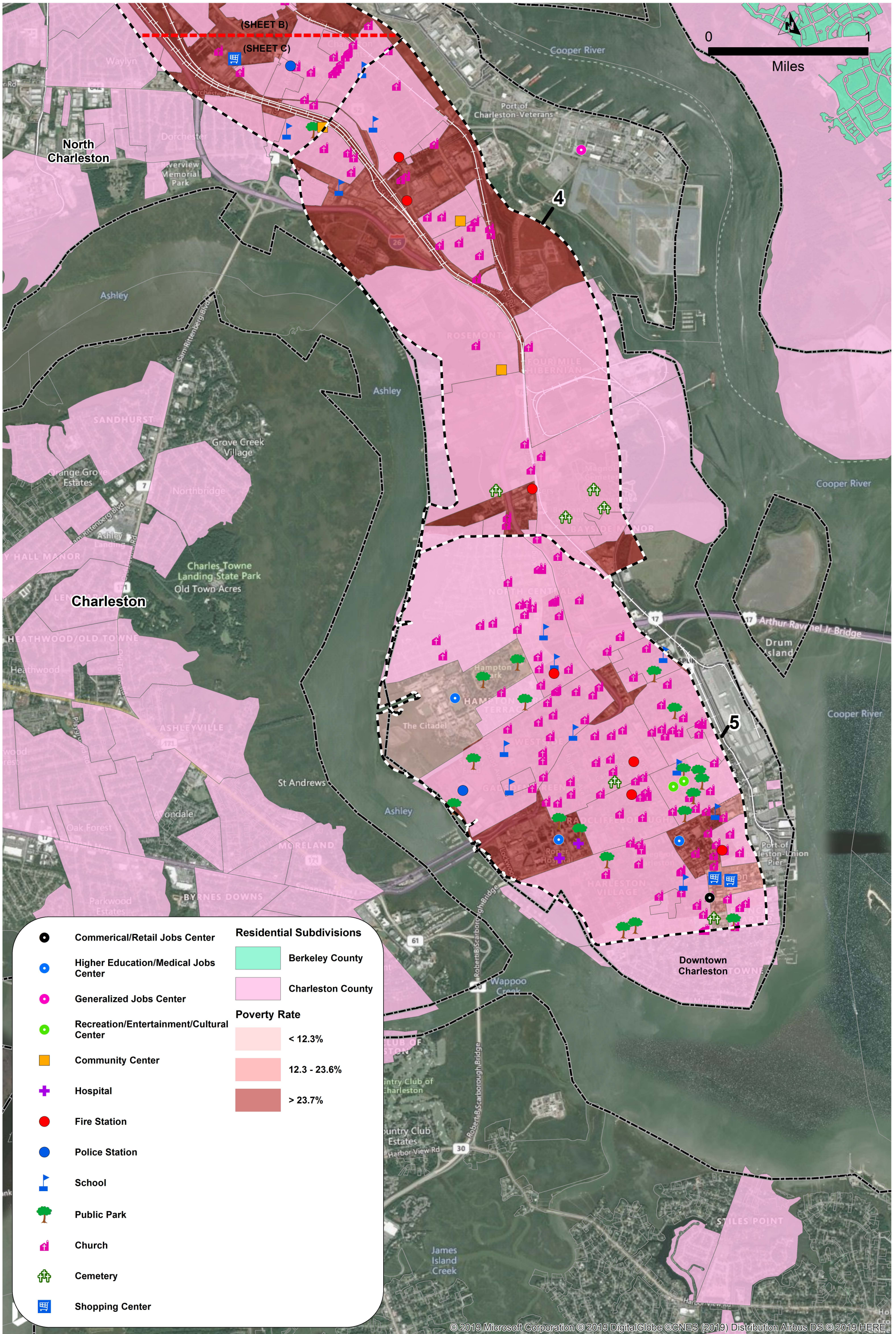


- |  |   |                                 |
|--|---|---------------------------------|
|  | <b>Commerical/Retail Jobs Center</b>            | <b>Residential Subdivisions</b> |
|  | <b>Higher Education/Medical Jobs Center</b>     | Berkeley County                 |
|  | <b>Generalized Jobs Center</b>                  | Dorchester County               |
|  | <b>Recreation/Entertainment/Cultural Center</b> | Charleston County               |
|  | <b>Transportation Jobs Center</b>               | <b>Poverty Rate</b>             |
|  | <b>Community Center</b>                         | < 12.3%                         |
|  | <b>Hospital</b>                                 | 12.3 - 23.6%                    |
|  | <b>Fire Station</b>                             | > 23.7%                         |
|  | <b>Police Station</b>                           |                                 |
|  | <b>School</b>                                   |                                 |
|  | <b>Public Park</b>                              |                                 |
|  | <b>Church</b>                                   |                                 |
|  | <b>Cemetery</b>                                 |                                 |
|  | <b>Shopping Center</b>                          |                                 |

Study Segment Zones  
 County Boundaries  
 Match Line

## Lowcountry Rapid Transit Community Constraints (Sheet B)

Data Sources: BCDCOG, SCDOT, Bing Maps, HDR, SCDOT, Census ACS 2017

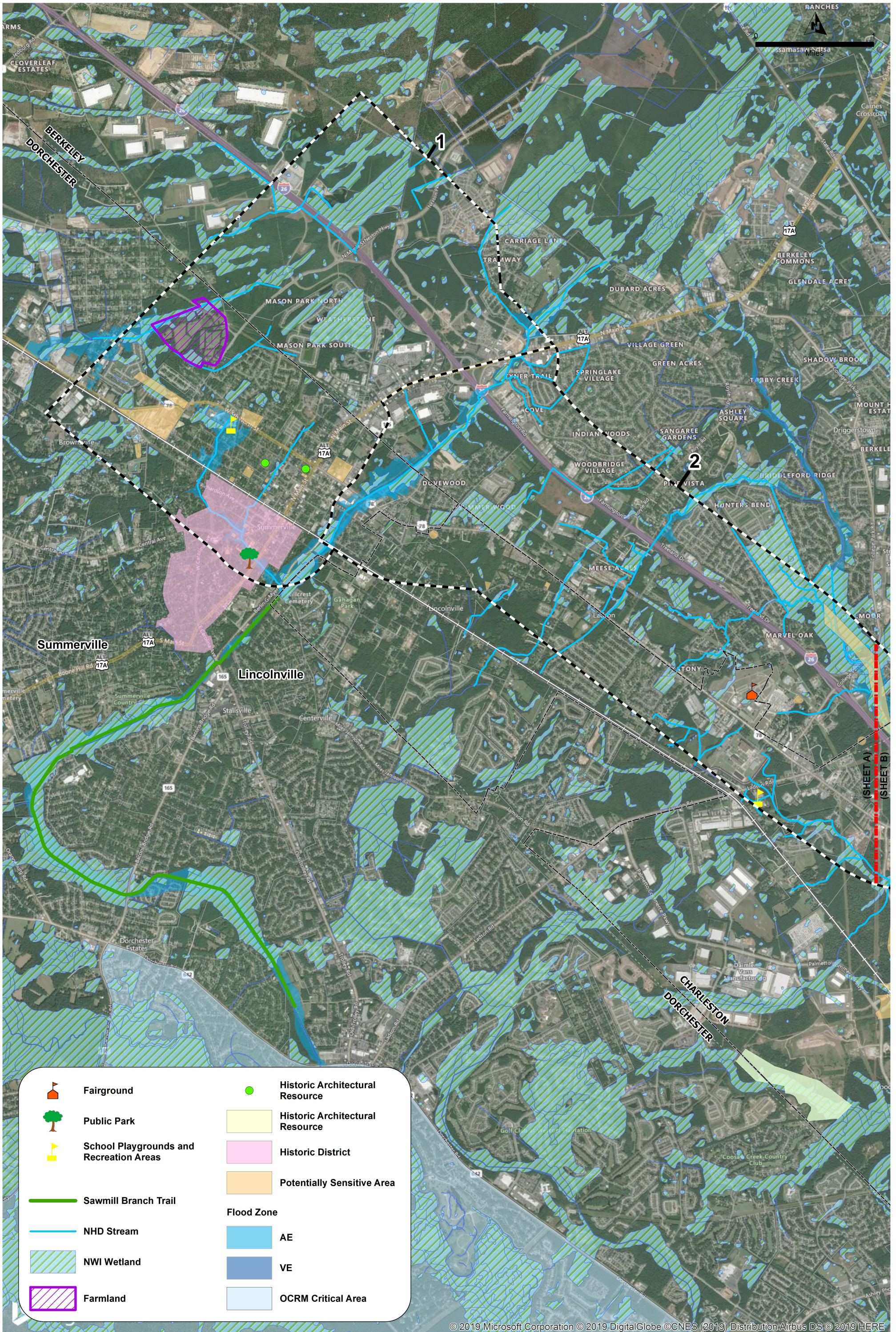


●	Commerical/Retail Jobs Center	Residential Subdivisions
●	Higher Education/Medical Jobs Center	■ Berkeley County
●	Generalized Jobs Center	■ Charleston County
●	Recreation/Entertainment/Cultural Center	Poverty Rate
■	Community Center	■ < 12.3%
+	Hospital	■ 12.3 - 23.6%
●	Fire Station	■ > 23.7%
●	Police Station	
▲	School	
🌳	Public Park	
🏠	Church	
⛪	Cemetery	
🛒	Shopping Center	

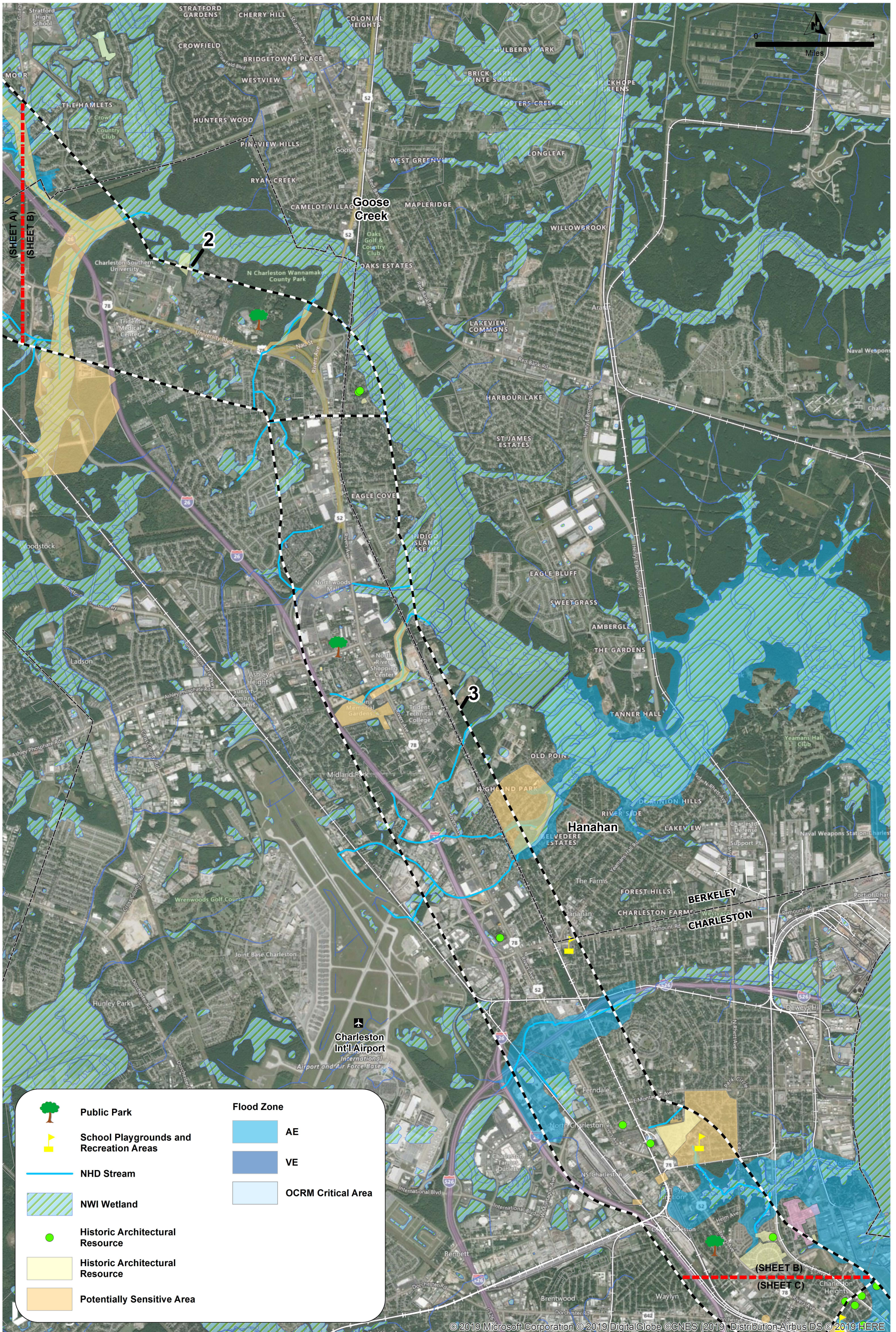
⎓	Study Segment Zones
▭	County Boundaries
—	Match Line

## Lowcountry Rapid Transit Community Constraints (Sheet C)

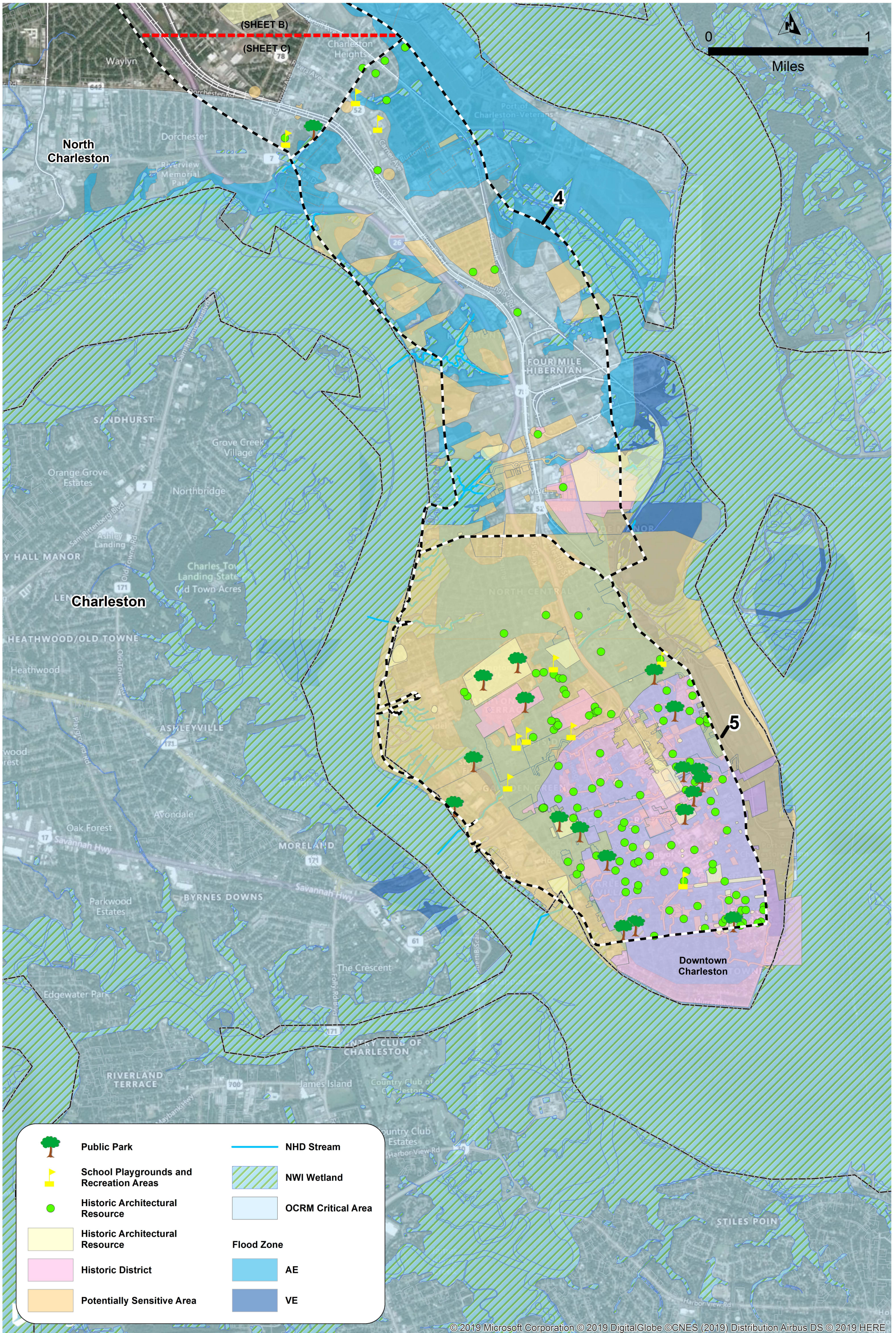
Data Sources: BCDCOG, SCDOT, Bing Maps, HDR, SCDOT, Census ACS 2017



	Fairground		Historic Architectural Resource
	Public Park		Historic Architectural Resource
	School Playgrounds and Recreation Areas		Historic District
	Sawmill Branch Trail		Potentially Sensitive Area
	NHD Stream	<b>Flood Zone</b>	
	NWI Wetland		AE
	Farmland		VE
			OCRM Critical Area



	<b>Public Park</b>		<b>Flood Zone</b>
	<b>School Playgrounds and Recreation Areas</b>		<b>AE</b>
	<b>NHD Stream</b>		<b>VE</b>
	<b>NWI Wetland</b>		<b>OCRM Critical Area</b>
	<b>Historic Architectural Resource</b>		
	<b>Historic Architectural Resource</b>		
	<b>Potentially Sensitive Area</b>		



© 2019 Microsoft Corporation © 2019 DigitalGlobe © CNES (2019) Distribution Airbus DS © 2019 HERE



**Study Segment Zones**  
 County Boundaries  
 Match Line

### Lowcountry Rapid Transit Environmental Constraints (Sheet C)

Data Sources: BCDCOG, SCDOT, Bing Maps, Brockington and Associates, FEMA, HDR, NHD USGS, SCDHEC-OCRM, USDA-NRCS, USFWS